

## AC FIRE INLINE SERIES 1580 FIRE PUMP PARTS DIAGRAMS



a xylem brand

Pump Models	Shaft Sizes	Repack Kit	Major Repair Kit	Notes
1.5x1.5x7F	1.250"	1DN200	1DN217	50 gpm
	1.625"	<b>1DN201</b>	<b>1DN218</b>	
2.5x2.5x9.5F	1.625"	<b>1DN201</b>	<b>1DN219</b>	50, 100, 150, 200, 250 gpm
2.5x2.5x7F	1.250"	1DN200	1DN217	100, 150 gpm
	1.625"	<b>1DN201</b>	<b>1DN218</b>	
3x3x7F	1.250"	1DN200	1DN217	200, 250, 300 gpm
	1.625"	<b>1DN201</b>	<b>1DN218</b>	
3x3x9.5F	1.625"	<b>1DN201</b>	<b>1DN219</b>	300 gpm
(H) 4x4x7F	1.625"	<b>1DN201</b>	<b>1DN218</b>	250, 300, 400, 450, 500 gpm
(H) 4x4x9.5F	1.625"	<b>1DN201</b>	<b>1DN219</b>	250, 300, 400, 450, 500 gpm
6x6x9.5F-L	1.625"	<b>1DN201</b>	<b>1DN219</b>	400, 500, 750 gpm
	2.000"	<b>1DN202</b>	<b>1DN220</b>	
(H) 6x6x11F-S	1.625"	<b>1DN201</b>	<b>1DN218</b>	400, 750 gpm
(H) 6x6x11F-L	1.625"	<b>1DN201</b>	<b>1DN218</b>	400, 500, 750 gpm
	2.000"	<b>1DN202</b>	<b>1DN220</b>	
8x8x9.5F	1.625"	<b>1DN201</b>	<b>1DN219</b>	750, 1000 gpm
	2.000"	<b>1DN202</b>	1DN220/21	
8x8x13.5F	2.000"	<b>1DN202</b>	<b>1DN220</b>	1250, 1500 gpm
(H) 8x8x18F	2.000"	<b>1DN202</b>	1DN220/21	1250, 1500 gpm Discontinued – Parts available
* 5x5x7F	1.625"	Discontinued - Shares some parts with 4x4x7 (except volute and wear ring), consult with factory for parts		
* 8x8x11.5F	2.000"	Discontinued - Parts available		

*"Repack" kit is similar to "minor repair" kit with other models*

### PRODUCT WARRANTY COVERAGE

A-C Fire Pump undertakes to remedy defects in their products under these conditions:

- The faults are due to defects in design, materials, or workmanship.
- The faults are reported to a local sales and service representative within the warranty period, as described in the Terms and Conditions of Sale provided with the Sales Contract.
- The product is used only under the conditions that are described in this manual.
- The monitoring equipment that is incorporated in the product is correctly connected and in use.
- All service and repair work is performed by qualified personnel.

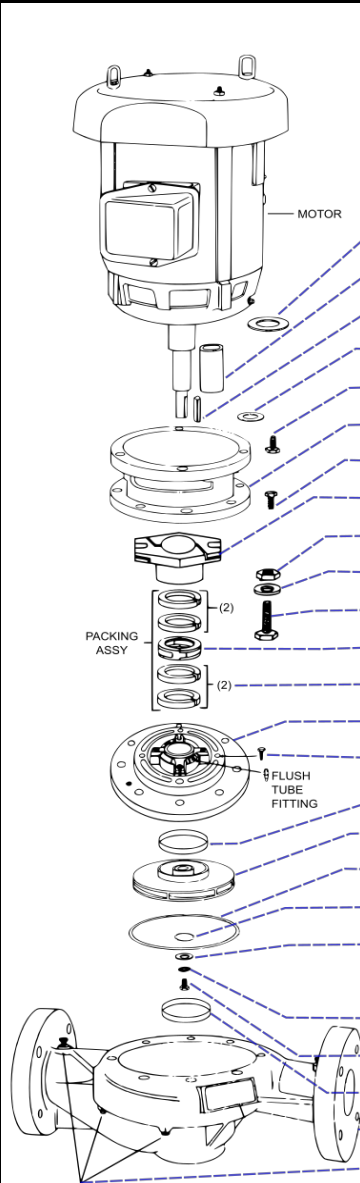
### LIMITATIONS

The warranty does not cover defects that are caused by these situations:

- Deficient maintenance.
- Improper installation.
- Modifications or changes to the product that are made without consulting an A-C Fire Pump authorized representative.
- Incorrectly executing repair work.
- Normal wear and tear.

A-C Fire Pump assumes no liability for these situations:

- Bodily injuries.
- Material damages.
- Economic losses.



AC FIRE 1580 / 1.5x1.5x7F			143JP-184JP Motor 1.250" Shaft Dia		213JP-215JP Motor 1.625" Shaft Dia			
REF #	DESCRIPTION	QTY	PART NUMBER	DN200	DN217	PART NUMBER	DN201	DN218
11	Water Slinger	1	P53550		x	P77320		x
4	Shaft Sleeve	1	P85075		x	P78738		x
5	Key - Impeller	1	52-123-677-015			52-123-677-014		
23	Shaft Sleeve Gasket *	N/A	-			-		
13	Motor Bracket Capscrew	4	CP-611-271-466			K03600		
12	Volute Capscrew	1	P85023			P85025		
10	Motor Bracket	8	CP-611-271-465			CP-611-271-466		
18	Packing Gland	2	P85048			P85050		
20	Packing Gland Nut	2	J91659	x	x	J91659	x	x
21	Packing Gland Washer	2	J91649	x	x	J91649	x	x
19	Packing Gland Screw	2	J92052	x	x	J92052	x	x
17	Seal Cage (Lantern Ring)	1	P84985	x	x	P84986	x	x
16	Packing Ring	4	C/F		x	AC6682	x	x
14	Volute Coverplate	1	P85027			P85035		
15	Cover Plate Cap Screw	8	CP-611-271-465			CP-611-271-466		
24	Cover Plate Wear Ring **	N/A	-			-		
3	Impeller	1	P85518			52-433-358-515		
6	Volute Gasket	1	P57700		x	P57700		x
23	Shaft Sleeve Gasket *	N/A	-			-		
7	Impeller Washer	1	P46390			P51250		
7A	Seal Washer	1				AC2507		
8	Impeller Lockwasher	1	J23874			J23874		
9	Impeller Capscrew	1	CP-611-325-467			CP-611-325-467		
22	Volute Wear Ring	1	P46700		x	P46700		x
2	Volute (Pump Casing)	1	P85600			P85600		
1	Volute Drain Plug (1/4")	5	AC0532			AC0532		

\* Shaft sleeve gasket not required on pump smaller than 4x4x7F

\*\* Cover only needed on 4x4x9.5F, 6x6x9.5F-L, 6x6x11F-S, 6x6x11F-L, 8x8x9.5F, 8x8x13.5F, 8x8x18F

Parts available as part of a kit (DNxxx) can no longer be ordered individually

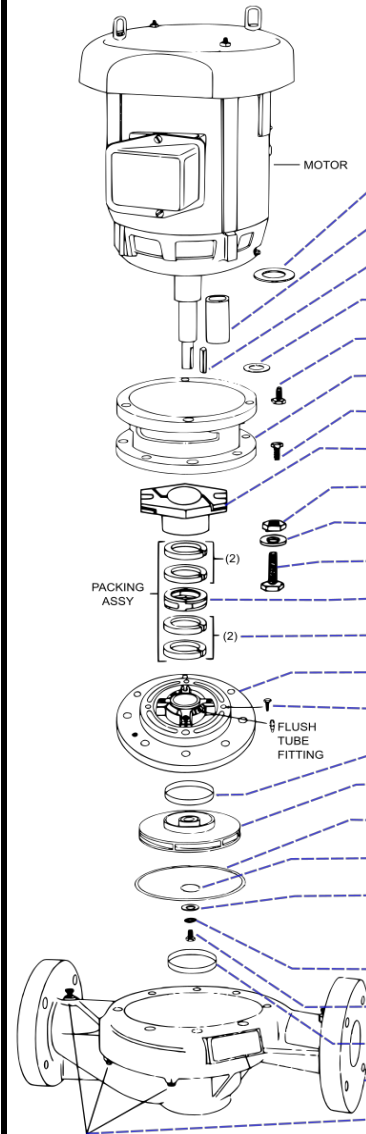
AC FIRE 1580 / 2.5x2.5x7F			143JP-184JP Motor 1.250" Shaft Dia			213JP-215JP Motor 1.625" Shaft Dia		
REF #	DESCRIPTION	QTY	PART NUMBER	DN200	DN217	PART NUMBER	DN201	DN218
11	Water Slinger	1	P53550		x	P77320		x
4	Shaft Sleeve	1	P85075		x	P78738		x
5	Key - Impeller	1	52-123-677-015			52-123-677-014		
23	Shaft Sleeve Gasket *	N/A	-			-		
13	Motor Bracket Capscrew	4	CP-611-271-466			K03600		
12	Volute Capscrew	1	P85023			P85025		
10	Motor Bracket	8	CP-611-271-465			DJ0081		
18	Packing Gland	2	P85048			P85050		
20	Packing Gland Nut	2	J91659	x	x	J91659	x	x
21	Packing Gland Washer	2	J91649	x	x	J91649	x	x
19	Packing Gland Screw	2	J92052	x	x	J92052	x	x
17	Seal Cage (Lantern Ring)	1		x	x	P84986	x	x
16	Packing Ring	4	P84985	x	x	AC6682	x	x
14	Volute Coverplate	1	P85027			P85035		
15	Cover Plate Cap Screw	8	CP-611-271-465			CP-611-271-466		
24	Cover Plate Wear Ring **	N/A	-			-		
3	Impeller	1	P85520			P85532		
6	Volute Gasket	1	P57700		x	P57700		x
23	Shaft Sleeve Gasket *	N/A	-			-		
7	Impeller Washer	1	P46390			P51250		
7A	Seal Washer	1				AC2507		
8	Impeller Lockwasher	1	J23874			J23875		
9	Impeller Capscrew	1	CP-611-325-467			P13800		
22	Volute Wear Ring	1	P49145		x	P49145		x
2	Volute (Pump Casing)	1	P85604			P85604		
1	Volute Drain Plug (1/4")	5	AC0532			AC0532		

\* Shaft sleeve gasket not required on pump smaller than 4x4x7F

\*\* Cover only needed on 4x4x9.5F, 6x6x9.5F-L, 6x6x11F-S, 6x6x11F-L, 8x8x9.5F, 8x8x13.5F, 8x8x18F

Parts available as part of a kit (DNxxx) can no longer be ordered individually

REF #	DESCRIPTION	QTY	213JP-215JP Motor 1.625" Shaft Dia		284JP-326JP Motor 1.625" Shaft Dia			
			PART NUMBER	DN201	DN219	PART NUMBER	DN201	DN219
11	<b>Water Slinger</b>	1	P77320		x	P77320		x
4	<b>Shaft Sleeve</b>	1	P78738		x	P78738		x
5	Key - Impeller	1	52-123-677-014			52-123-677-014		
23	Shaft Sleeve Gasket *	N/A	-			-		
13	Motor Bracket Capscrew	4	K03600			P19490		
12	Volute Capscrew	1	P85025			P85099		
10	Motor Bracket	12	CP-611-271-505			CP-611-271-505		
18	Packing Gland	2	P85050			P85050		
20	<b>Packing Gland Nut</b>	2	J91659	x	x	J91659	x	x
21	<b>Packing Gland Washer</b>	2	J91649	x	x	J91649	x	x
19	<b>Packing Gland Screw</b>	2	J92052	x	x	J92052	x	x
17	<b>Seal Cage (Lantern Ring)</b>	1	P84986	x	x	P84986	x	x
16	<b>Packing Ring</b>	4	AC6682	x	x	AC6682	x	x
14	Volute Coverplate	1	P85039			P85039		
15	Cover Plate Cap Screw	8	CP-611-271-466			CP-611-271-466		
24	Cover Plate Wear Ring **	N/A	-			-		
3	Impeller	1	P85533			P85533		
6	<b>Volute Gasket</b>	1	P48690		x	P48690		x
23	Shaft Sleeve Gasket *	N/A	-			-		
7	Impeller Washer	1	P51250			P51250		
7A	Seal Washer	1	AC2507			AC2507		
8	Impeller Lockwasher	1	J23875			J23875		
9	Impeller Capscrew	1	P13800			P13800		
22	<b>Volute Wear Ring</b>	1	P49130		x	P49130		x
2	Volute (Pump Casing)	1	P85606			P85606		
1	Volute Drain Plug (1/4")	5	AC0532			AC0532		



\* Shaft sleeve gasket not required on pump smaller than 4x4x7F

\*\* Cover only needed on 4x4x9.5F, 6x6x9.5F-L, 6x6x11F-S, 6x6x11F-L, 8x8x9.5F, 8x8x13.5F, 8x8x18F

**Parts available as part of a kit (DNxxx) can no longer be ordered individually**

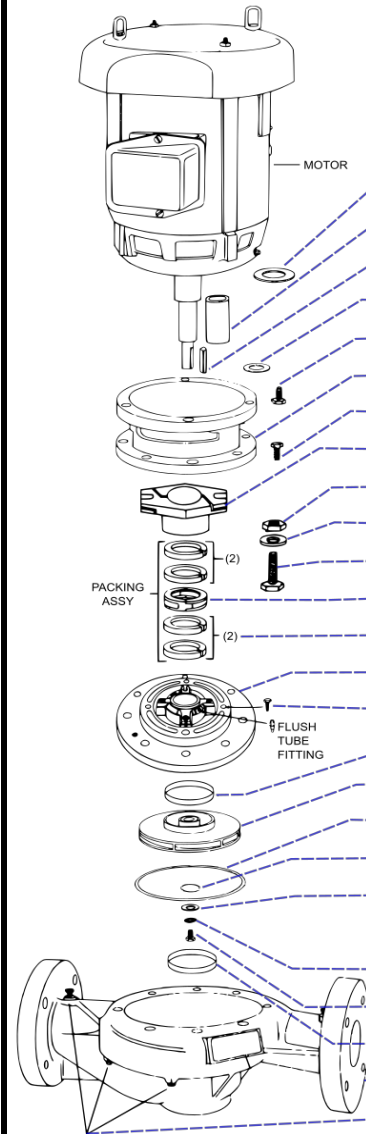
		<b>AC FIRE</b>		143JP-184JP Motor 1.250" Shaft Dia		213JP-215JP Motor 1.625" Shaft Dia		
		<b>1580 / 3x3x7F</b>						
REF #	DESCRIPTION	QTY	PART NUMBER	DN200	DN217	PART NUMBER	DN201	DN218
11	Water Slinger	8	CP-611-271-465		x	DJ0081		x
4	Shaft Sleeve	1	P85075		x	P78738		x
5	Key - Impeller	1	52-123-677-015			52-123-677-014		
23	Shaft Sleeve Gasket *	1	P85399			P85399		
13	Motor Bracket Capscrew	1	P85023			P85025		
12	Volute Capscrew	1	P53550			P77320		
10	Motor Bracket	1	CP-611-325-467			P13800		
18	Packing Gland	1	P84985			P84986		
20	Packing Gland Nut	2	J92052	x	x	J92052	x	x
21	Packing Gland Washer	2	J91659	x	x	J91659	x	x
19	Packing Gland Screw	2	P85048	x	x	P85050	x	x
17	Seal Cage (Lantern Ring)			x	x	AC6682	x	x
16	Packing Ring	4 / 8	CP-611-271-465	x	x	CP-611-271-466	x	x
14	Volute Coverplate	4	K03600			K03600		
15	Cover Plate Cap Screw	1	P85027			P85035		
24	Cover Plate Wear Ring **	N/A	-			-		
3	Impeller	1	P85522			P85534		
6	Volute Gasket	1	P57700		x	P57700		x
23	Shaft Sleeve Gasket *	N/A	-			-		
7	Impeller Washer	1	P46390			P51250		
7A	Seal Washer	N/A	-			-		
8	Impeller Lockwasher					AC2507		
9	Impeller Capscrew	1	J23874			J23875		
22	Volute Wear Ring	2	J91649		x	J91649		x
2	Volute (Pump Casing)	1	P85608			P85608		
1	Volute Drain Plug (1/4")	5	AC0532			AC0532		

\* Shaft sleeve gasket not required on pump smaller than 4x4x7F

\*\* Cover only needed on 4x4x9.5F, 6x6x9.5F-L, 6x6x11F-S, 6x6x11F-L, 8x8x9.5F, 8x8x13.5F, 8x8x18F

Parts available as part of a kit (DNxxx) can no longer be ordered individually

		<b>AC FIRE</b>		<b>284JP-326JP Motor</b>	
		<b>1580 / 3x3x9.5F</b>		<b>1.625" Shaft Dia</b>	
REF #	DESCRIPTION	QTY	PART NUMBER	1DN201	1DN219
11	Water Slinger	1	P77320		x
4	Shaft Sleeve	1	P78738		x
5	Key - Impeller	1	52-123-677-014		
23	Shaft Sleeve Gasket *	N/A	-		
13	Motor Bracket Capscrew	4	P19490		
12	Volute Capscrew	1	P85099		
10	Motor Bracket	12	CP-611-271-505		
18	Packing Gland	2	P85050		
20	Packing Gland Nut	2	J91659	x	x
21	Packing Gland Washer	2	J91649	x	x
19	Packing Gland Screw	2	J92052	x	x
17	Seal Cage (Lantern Ring)	1	P84986	x	x
16	Packing Ring	4	AC6682	x	x
14	Volute Coverplate	1	P85039		
15	Cover Plate Cap Screw	8	CP-611-271-466		
24	Cover Plate Wear Ring **	N/A	-		
3	Impeller	1	P85535		
6	Volute Gasket	1	P48690		x
23	Shaft Sleeve Gasket *	N/A	-		
7	Impeller Washer	1	P51250		
7A	Seal Washer	1	AC2507		
8	Impeller Lockwasher	1	J23875		
9	Impeller Capscrew	1	P13800		
22	Volute Wear Ring	1	P49870		x
2	Volute (Pump Casing)	1	P85610		
1	Volute Drain Plug (1/4")	5	AC0532		

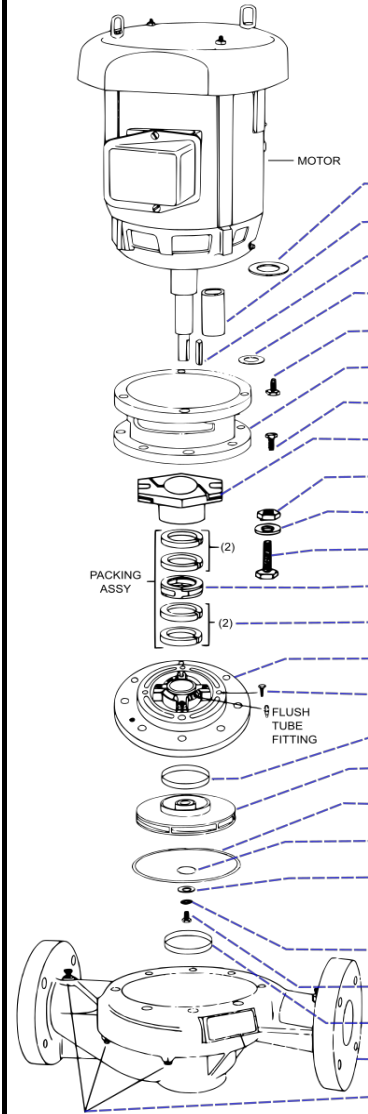


\* Shaft sleeve gasket not required on pump smaller than 4x4x7F

\*\* Cover only needed on 4x4x9.5F, 6x6x9.5F-L, 6x6x11F-S, 6x6x11F-L, 8x8x9.5F, 8x8x13.5F, 8x8x18F

Parts available as part of a kit (DNxxx) can no longer be ordered individually

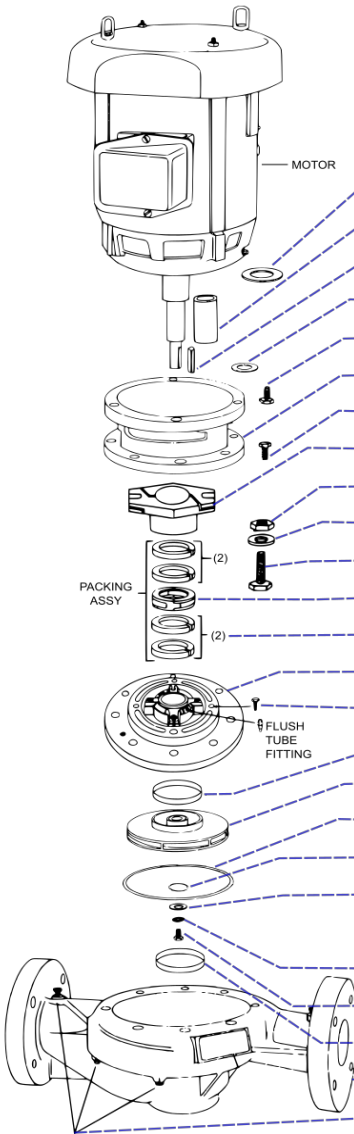
		AC FIRE		213JP-215JP Motor			284JP-326JP Motor		
		1580 / (H)4x4x7F		1.625" Shaft Dia			1.625" Shaft Dia		
REF #	DESCRIPTION	QTY	PART NUMBER	DN201	DN218	PART NUMBER	DN201	DN218	
11	Water Slinger	1	P77320		x	P77320		x	
4	Shaft Sleeve	1	P78738		x	P78738		x	
5	Key - Impeller	1	52-123-677-014			52-123-677-014			
23	Shaft Sleeve Gasket	1	52-122-982-003		x	52-122-982-003		x	
13	Motor Bracket Capscrew	4	K03600			P19490			
12	Volute Capscrew	1	P85025			P85099			
10	Motor Bracket	8	DJ0081			DJ0081			
18	Packing Gland	2	P85050			P85050			
20	Packing Gland Nut	2	J91659	x	x	J91659	x	x	
21	Packing Gland Washer	2	J91649	x	x	J91649	x	x	
19	Packing Gland Screw	2	J92052	x	x	J92052	x	x	
17	Seal Cage (Lantern Ring)	1	P84986	x	x	P84986	x	x	
16	Packing Ring	4	AC6682	x	x	AC6682	x	x	
14	Volute Coverplate	1	P85035			P85035			
15	Cover Plate Cap Screw	8	CP-611-271-466			CP-611-271-466			
24	Cover Plate Wear Ring **	N/A	-			-			
3	Impeller	1	AC8521			AC8521			
6	Volute Gasket	1	P57700		x	P57700		x	
23	Shaft Sleeve Gasket	1	52-122-982-003		x	52-122-982-003		x	
7	Impeller Washer	1	P51250			P51250			
7A	Seal Washer	1	AC2507			AC2507			
8	Impeller Lockwasher	1	J23875			J23875			
9	Impeller Capscrew	1	P13800			P13800			
22	Volute Wear Ring	1	P49142		x	P49142		x	
2	Volute (Pump Casing)	1	AC8507			AC8507			
1	Volute Drain Plug (1/4")	3	CP-711-527-004			P39050			
(H) 1	Volute Drain Plug (1/2")	3	CP-711-527-004			CP-711-527-004			
(H) 2	Volute (High Pressure)	1	AC8508			AC8508			



\*\* Cover only needed on 4x4x9.5F, 6x6x9.5F-L, 6x6x11F-S, 6x6x11F-L, 8x8x9.5F, 8x8x13.5F, 8x8x18F

Parts available as part of a kit (DNxxx) can no longer be ordered individually

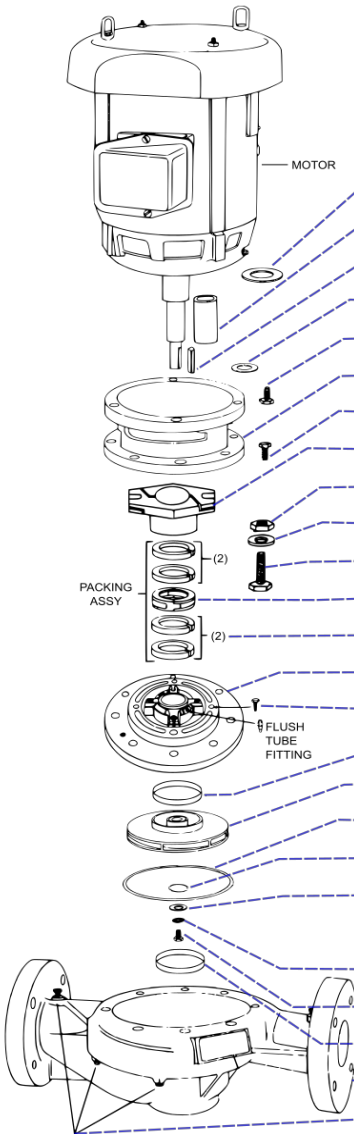
AC FIRE 1580 / (H)4x4x9.5F			213JP-215JP Motor 1.625" Shaft Dia			284JP-326JP Motor 1.625" Shaft Dia		
REF #	DESCRIPTION	QTY	PART NUMBER	DN201	DN219	PART NUMBER	DN201	DN219
11	Water Slinger	1	P77320		x	P77320		x
4	Shaft Sleeve	1	P78738		x	P78738		x
5	Key - Impeller	1	52-123-677-014			52-123-677-014		
23	Shaft Sleeve Gasket	1	52-122-982-003		x	J91649		x
13	Motor Bracket Capscrew	4	K03600			P19490		
12	Volute Capscrew	1	P85025			P85099		
10	Motor Bracket	12	P03470			P03470		
18	Packing Gland	2	P85050			P85050		
20	Packing Gland Nut	2	J91659	x	x	J91659	x	x
21	Packing Gland Washer	2	J91649	x	x	J91649	x	x
19	Packing Gland Screw	2	J92052	x	x	J92052	x	x
17	Seal Cage (Lantern Ring)	1	P84986	x	x	P84986	x	x
16	Packing Ring	4	AC6682	x	x	AC6682	x	x
14	Volute Coverplate	1	P82937			P82937		
15	Cover Plate Cap Screw	8	P52320			DJ0071		
24	Cover Plate Wear Ring	1	P82935			P82935		
3	Impeller	1	AC8502			AC8502		
6	Volute Gasket	1	P48690		x	P48690		x
23	Shaft Sleeve Gasket	1	52-122-982-003		x	J91649		x
7	Impeller Washer	1	P51250			P51250		
7A	Seal Washer	1	AC2507			AC2507		
8	Impeller Lockwasher	1	J23875			J23875		
9	Impeller Capscrew	1	P13800			P13800		
22	Volute Wear Ring	1	P49142		x	P49142		x
2	Volute (Pump Casing)	1	AC8504			AC8504		
1	Volute Drain Plug (1/4")	3	P39050			P39050		
(H) 1	Volute Drain Plug (1/2")	3	CP-711-527-004			CP-711-527-004		
(H) 2	Volute (High Pressure)	1	AC8505			AC8505		



Parts available as part of a kit (DNxxx) can no longer be ordered individually



AC FIRE 1580 / 6x6x9.5F-L			254JP-256JP Motor 1.625" Shaft Dia			284JP-326JP Motor 1.625" Shaft Dia		
REF #	DESCRIPTION	QTY	PART NUMBER	DN201	DN219	PART NUMBER	DN201	DN219
11	Water Slinger	1	P77320		x	P77320		x
4	Shaft Sleeve	1	P78738		x	P78738		x
5	Key - Impeller	1	AC2520			AC2520		
23	Shaft Sleeve Gasket	1	52-122-982-003		x	52-122-982-003		x
13	Motor Bracket Capscrew	4	K03600			P19490		
12	Volute Capscrew	1	P85025			P85099		
10	Motor Bracket	12	P03470			P03470		
18	Packing Gland	2	P85050			P85050		
20	Packing Gland Nut	2	J91659	x	x	J91659	x	x
21	Packing Gland Washer	2	J91649	x	x	J91649	x	x
19	Packing Gland Screw	2	J92052	x	x	J92052	x	x
17	Seal Cage (Lantern Ring)	1	P84986	x	x	P84986	x	x
16	Packing Ring	4	AC6682	x	x	AC6682	x	x
14	Volute Coverplate	1	P82937			P82937		
15	Cover Plate Cap Screw	8	P52320			DJ0071		
24	Cover Plate Wear Ring	1	P82935			P82935		
3	Impeller	1	P58648			P58648		
6	Volute Gasket	1	P48690		x	P48690		x
23	Shaft Sleeve Gasket	1	52-122-982-003		x	52-122-982-003		x
7	Impeller Washer	1	P51250			P51250		
7A	Seal Washer	1	AC2507			AC2507		
8	Impeller Lockwasher	1	J23875			J23875		
9	Impeller Capscrew	1	AC2509			AC2509		
22	Volute Wear Ring	1	P49143		x	P49143		x
2	Volute (Pump Casing)	1	P85514			P85514		
1	Volute Drain Plug (1/4")	6	CP-711-523-002			CP-711-523-002		



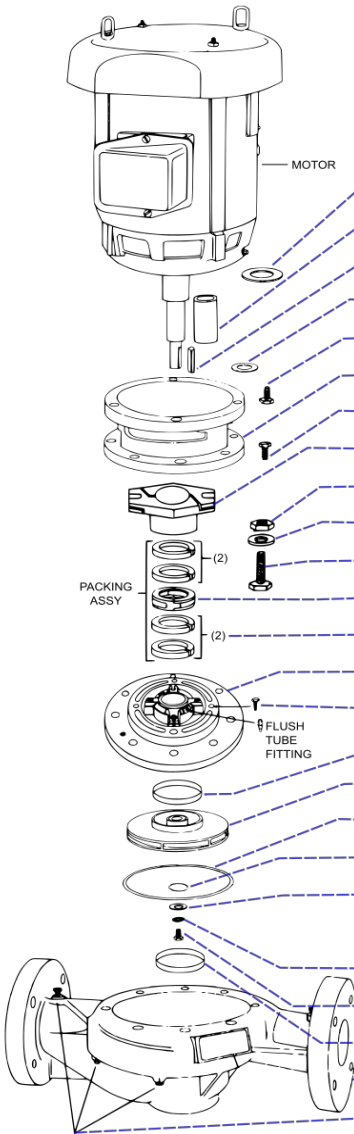
Parts available as part of a kit (DNxxx) can no longer be ordered individually

		<b>AC FIRE</b>		<b>364JP-405JP Motor</b>		
		<b>1580 / 6x6x9.5F-L</b>		<b>2.000" Shaft Dia</b>		
REF #	DESCRIPTION	QTY	PART NUMBER	DN202	DN220	
11	Water Slinger	1	52-108-475-011		x	
4	Shaft Sleeve	1	AC0601		x	
5	Key - Impeller	1	AC2519			
23	Shaft Sleeve Gasket	1	P58646		x	
13	Motor Bracket Capscrew	4	P19490			
12	Volute Capscrew	1	P85099			
10	Motor Bracket	12	P03470			
18	Packing Gland	1	AC0664			
20	Packing Gland Nut	2	J91659	x	x	
21	Packing Gland Washer	2	J91649	x	x	
19	Packing Gland Screw	2	CP-611-327-480	x	x	
17	Seal Cage (Lantern Ring)	1	AC0803	x	x	
16	Packing Ring	5	AC6134	x	x	
14	Volute Coverplate	1	P58644			
15	Cover Plate Cap Screw	8	DJ0071			
24	Cover Plate Wear Ring	1	P82935		x	
3	Impeller	1	P58649			
6	Volute Gasket	1	P48690		x	
23	Shaft Sleeve Gasket	1	P58646		x	
7	Impeller Washer	1	AC2506			
7A	Seal Washer	1	AC2507			
8	Impeller Lockwasher	1	J23875			
9	Impeller Capscrew	1	AC2509			
22	Volute Wear Ring	1	P49143		x	
2	Volute (Pump Casing)	1	P85514			
1	Volute Drain Plug (1/4")	6	CP-711-523-002			
-	Packing Ring Backing	1	AC0592			

PAGE 2 for  
6x6x9.5-L  
Additional Motor Options

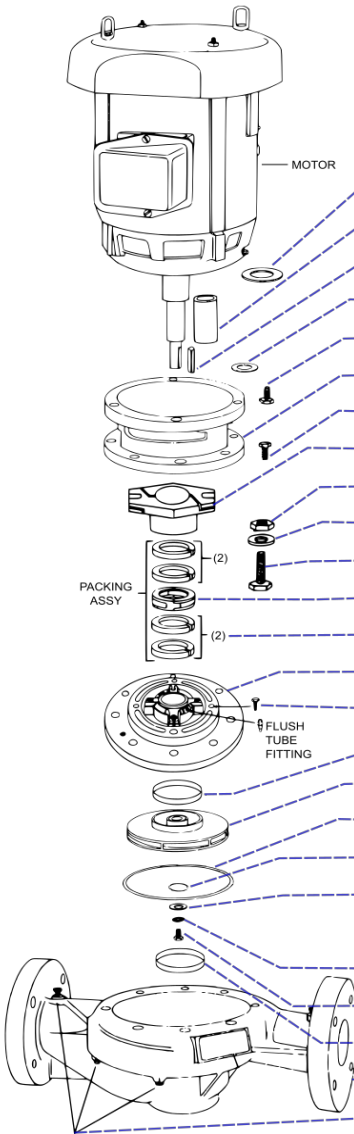
Parts available as part of a kit (DNxxx) can no longer be ordered individually

AC FIRE 1580 / (H)6x6x11F-L			284JP-326JP Motor 1.625" Shaft Dia			364JP-405JP Motor 2.000" Shaft Dia		
REF #	DESCRIPTION	QTY	PART NUMBER	DN201	DN218	PART NUMBER	DN202	DN220
11	Water Slinger	1	P77320		x	52-108-475-011		x
4	Shaft Sleeve	1	P78738		x	AC0601		x
5	Key - Impeller	1	P49372			AC2508		
23	Shaft Sleeve Gasket	1	52-122-982-003		x	P58646		x
13	Motor Bracket Capscrew	4	P19490			P19490		
12	Volute Capscrew	1	P85099			P85099		
10	Motor Bracket	16	P13780			P13780		
18	Packing Gland	2	P85050			AC0664		
20	Packing Gland Nut	2	J91659	x	x	J91659	x	x
21	Packing Gland Washer	2	J91649	x	x	J91649	x	x
19	Packing Gland Screw		J92271	x	x	CP-611-327-480	x	x
17	Seal Cage (Lantern Ring)	1	P84986	x	x	AC0803	x	x
16	Packing Ring	4	AC6682	x	x	AC6134	x	x
14	Volute Coverplate	1	P82936			P58642		
15	Cover Plate Cap Screw	8	DJ0071			DJ0071		
24	Cover Plate Wear Ring	1	P49138		x	P49138		x
3	Impeller	1	P58652			P58653		
6	Volute Gasket	1	P80765		x	P80765		x
23	Shaft Sleeve Gasket	1	52-122-982-003		x	P58646		x
7	Impeller Washer	1	P51250			AC2506		
7A	Seal Washer	1	AC2507			AC2507		
8	Impeller Lockwasher	1	J23875			J23875		
9	Impeller Capscrew	1	P13800			P13800		
22	Volute Wear Ring	1	P51390		x	P51390		x
2	Volute (Pump Casing)	1	P85641			P85641		
1	Volute Drain Plug (1/4")	6	CP-711-523-002			CP-711-523-002		
-	Packing Ring Backing	-	N/A			AC0592 (QTY 1)		
(H) 2	Volute (High Pressure)	1	P58658			P58658		



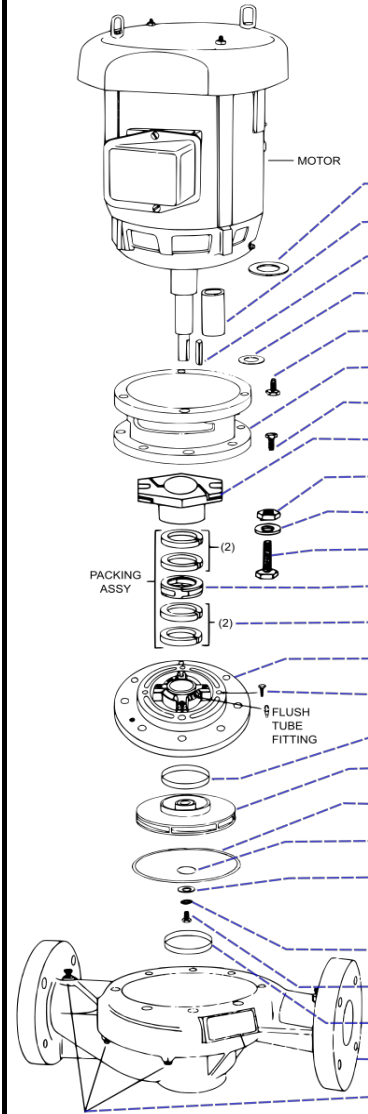
Parts available as part of a kit (DNxxx) can no longer be ordered individually

AC FIRE 1580 / (H)6x6x11F-S			213JP-215JP Motor 1.625" Shaft Dia			284JP-326JP Motor 1.625" Shaft Dia		
REF #	DESCRIPTION	QTY	PART NUMBER	DN201	DN218	PART NUMBER	DN201	DN218
11	Water Slinger	1	P77320		x	P77320		x
4	Shaft Sleeve	1	P78738		x	P78738		x
5	Key - Impeller	1	P49372			P49372		
23	Shaft Sleeve Gasket	1	52-122-982-003		x	52-122-982-003		x
13	Motor Bracket Capscrew	4	K03600			P19490		
12	Volute Capscrew	1	P85025			P85099		
10	Motor Bracket	16	P13780			P13780		
18	Packing Gland	2	P85050			P85050		
20	Packing Gland Nut	2	J91659	x	x	J91659	x	x
21	Packing Gland Washer	2	J91649	x	x	J91649	x	x
19	Packing Gland Screw	2	J92271	x	x	J92271	x	x
17	Seal Cage (Lantern Ring)	1	P84986	x	x	P84986	x	x
16	Packing Ring	4	AC6682	x	x	AC6682	x	x
14	Volute Coverplate	1	P82936			P82936		
15	Cover Plate Cap Screw	8	P52320			DJ0071		
24	Cover Plate Wear Ring	1	P49138		x	P49138		x
3	Impeller	1	P50872			P50872		
6	Volute Gasket	1	P80765		x	P80765		x
23	Shaft Sleeve Gasket	1	52-122-982-001		x	52-122-982-001		x
7	Impeller Washer	1	P51250			P51250		
7A	Seal Washer	1	AC2507			AC2507		
8	Impeller Lockwasher	1	J23875			J23875		
9	Impeller Capscrew	1	P13800			P13800		
22	Volute Wear Ring	1	P51390		x	P51390		x
2	Volute (Pump Casing)	1	P85641			P85641		
1	Volute Drain Plug (1/4")	6	CP-711-523-002			CP-711-523-002		
(H) 2	Volute (High Pressure)	1	P58658			P58658		

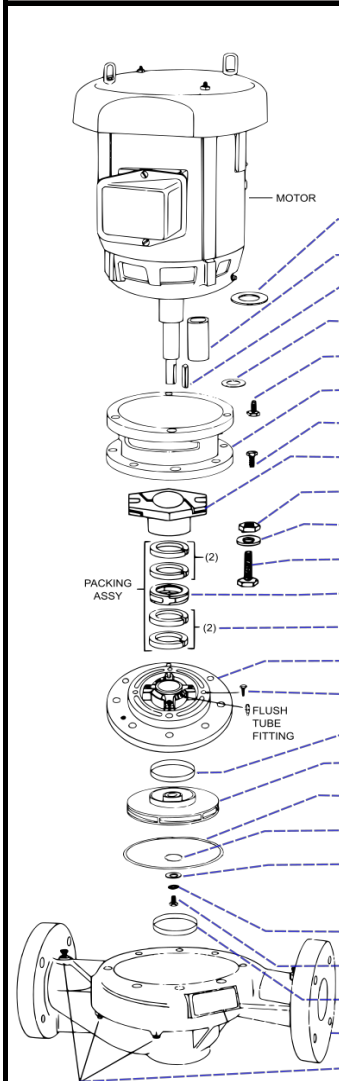


Parts available as part of a kit (DNxxx) can no longer be ordered individually

		<b>AC FIRE</b>		<b>284JP-326JP Motor</b>			<b>364JP-405JP Motor</b>		
		<b>1580 / (H)8x8x9.5F</b>		<b>1.625" Shaft Dia</b>			<b>2.000" Shaft Dia</b>		
REF #	DESCRIPTION	QTY	PART NUMBER	DN201	DN219	PART NUMBER	DN202	DN220	
11	Water Slinger	1	P77320		x	AC8670		x	
4	Shaft Sleeve	1	P78738		x	AC0601		x	
5	Key - Impeller	1	AC2442			AC2441			
23	Shaft Sleeve Gasket	1	52-122-982-003		x	P58646		x	
13	Motor Bracket Capscrew	4	P19490			P19490			
12	Volute Capscrew	1	P85099			P85099			
10	Motor Bracket	12	P03470			P03470			
18	Packing Gland	2	P85050			AC0664			
20	Packing Gland Nut	2	J91659	x	x	J91659	x	x	
21	Packing Gland Washer	2	J91649	x	x	J91649	x	x	
19	Packing Gland Screw	2	J92052	x	x	AC8669	x	x	
17	Seal Cage (Lantern Ring)	1	P84986	x	x	AC0803	x	x	
16	Packing Ring	4	AC6682	x	x	AC6134 (QTY 5)	x	x	
14	Volute Coverplate	1	P82937			P58644			
15	Cover Plate Cap Screw	8	DJ0071			DJ0071			
24	Cover Plate Wear Ring	1	P82935		x	P82935		x	
3	Impeller	1	AC8479			AC8480			
6	Volute Gasket	1	P48690		x	P48690		x	
23	Shaft Sleeve Gasket	1	52-122-982-003		x	P58646		x	
7	Impeller Washer	1	P51250			AC2506			
7A	Seal Washer	1	AC2507			AC2507			
8	Impeller Lockwasher	1	J23875			J23875			
9	Impeller Capscrew	1	AC2443			AC2444			
22	Volute Wear Ring	1	P49144		x	P49144		x	
2	Volute (Pump Casing)	1	P85516			P85516			
1	Volute Drain Plug (1/4")	3	CP-711-523-004			CP-711-523-004			
-	Packing Ring Backing		N/A			AC0592 (QTY 1)			
(H) 1	Volute Drain Plug (1/2")	3	P39050			P39050			
(H) 2	Volute (High Pressure)	1	AC2445			AC2445			



Parts available as part of a kit (DNxxx) can no longer be ordered individually



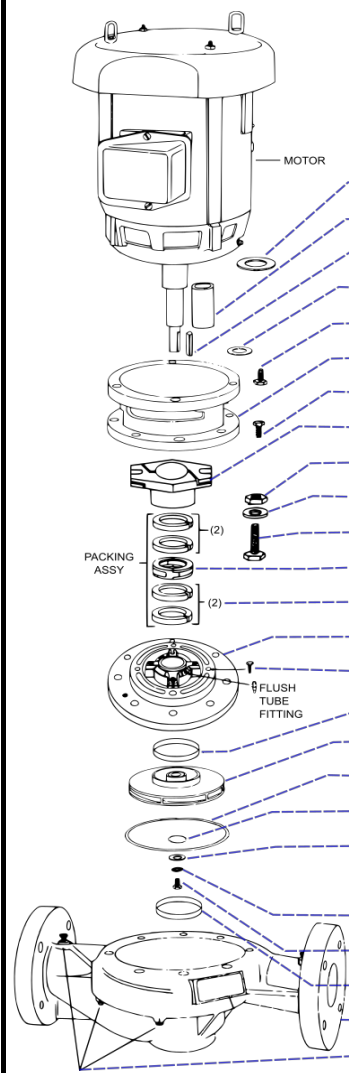
AC FIRE		364JP-405JP Motor		2.000" Shaft Dia	
1580 / (H)8x8x11.5F					
REF #	DESCRIPTION	QTY	PART NUMBER	DN202	DN220
11	Water Slinger	1	AC8670		x
4	Shaft Sleeve	1	AC0601		x
5	Key - Impeller	1	AC8628		
23	Shaft Sleeve Gasket	1	P58646		x
13	Motor Bracket Capscrew	4	P19490		
12	Volute Capscrew	1	P59541		
10	Motor Bracket	16	K04500		
18	Packing Gland	1	AC0664		
20	Packing Gland Nut	2	J91659	x	x
21	Packing Gland Washer	2	J91649	x	x
19	Packing Gland Screw	2	AC8669	x	x
17	Seal Cage (Lantern Ring)	1	AC0803	x	x
16	Packing Ring	5	AC6134	x	x
14	Volute Coverplate	-	C/F		
15	Cover Plate Cap Screw	-	C/F		
24	Cover Plate Wear Ring	1	P59543		x
3	Impeller	1	P59537		
6	Volute Gasket	1	P80767		x
23	Shaft Sleeve Gasket	1	P58646		x
7	Impeller Washer	1	AC2506		
7A	Seal Washer	1	AC2507		
8	Impeller Lockwasher	1	J23875		
9	Impeller Capscrew	1	AC8629		
22	Volute Wear Ring	1	P49138		x
2	Volute (Pump Casing)	1	AC8646		
1	Volute Drain Plug (1/4")	3	CP-711-523-004		
-	Packing Ring Backing	1	AC0592		
-	Saddle	1	AC8668		
-	Saddle Capscrew	4	J92298		
(H) 1	Volute Drain Plug (1/2")	3	P39050		
(H) 2	Volute (High Pressure)	1	AC8647		

**OBSOLETE**

\*\* Cover only needed on 4x4x9.5F, 6x6x9.5F-L, 6x6x11F-S, 6x6x11F-L, 8x8x9.5F, 8x8x13.5F, 8x8x18F

Parts available as part of a kit (DNxxx) can no longer be ordered individually

AC FIRE 1580 / (H)8x8x13.5F			364JP-405JP Motor 2.000" Shaft Dia		
REF #	DESCRIPTION	QTY	PART NUMBER	DN202	DN220
11	Water Slinger	1	AC8670		X
4	Shaft Sleeve	1	AC0601		X
5	Key - Impeller	1	AC8628		
23	Shaft Sleeve Gasket	1	P58646		X
13	Motor Bracket Capscrew	4	P19490		
12	Volute Capscrew	1	P59541		
10	Motor Bracket	16	K04500		
18	Packing Gland	1	AC0664		
20	Packing Gland Nut	2	J91659	X	X
21	Packing Gland Washer	2	J91649	X	X
19	Packing Gland Screw	2	AC8669	X	X
17	Seal Cage (Lantern Ring)	1	AC0803	X	X
16	Packing Ring	5	AC6134	X	X
14	Volute Coverplate	-	C/F		
15	Cover Plate Cap Screw	-	C/F		
24	Cover Plate Wear Ring	1	P59543		X
3	Impeller	1	P59537		
6	Volute Gasket	1	P80767		X
23	Shaft Sleeve Gasket	1	P58646		X
7	Impeller Washer	1	AC2506		
7A	Seal Washer	1	AC2507		
8	Impeller Lockwasher	1	J23875		
9	Impeller Capscrew	1	AC8629		
22	Volute Wear Ring	1	P49138		X
2	Volute (Pump Casing)	1	AC8646		
1	Volute Drain Plug (1/4")	3	CP-711-523-004		
-	Packing Ring Backing	1	AC0592		
-	Saddle	1	AC8668		
-	Saddle Capscrew	4	J92298		
(H) 1	Volute Drain Plug (1/2")	3	P39050		
(H) 2	Volute (High Pressure)	1	AC8647		



Parts available as part of a kit (DNxxx) can no longer be ordered individually

## AC FIRE 1580 / (H)8x8x18F

364JP-405JP Motor  
2.000" Shaft Dia

OBSOLETE

REF #	DESCRIPTION	QTY	PART NUMBER	DN202	DN220
11	Water Slinger	1	AC8670		x
4	Shaft Sleeve	1	AC0601		x
5	Key - Impeller	1	AC8643		
23	Shaft Sleeve Gasket	1	P58646		x
13	Motor Bracket Capscrew	4	P19490		
12	Volute Capscrew	1	AC8638		
10	Motor Bracket	18	J92292		
18	Packing Gland	1	AC0664		
20	Packing Gland Nut	2	J91659	x	x
21	Packing Gland Washer	2	J91649	x	x
19	Packing Gland Screw	2	AC8669	x	x
17	Seal Cage (Lantern Ring)	1	AC0803	x	x
16	Packing Ring	5	AC6134	x	x
14	Volute Coverplate	-	C/F		
15	Cover Plate Cap Screw	-	C/F		
24	Cover Plate Wear Ring	1	AC8640		x
3	Impeller	1	AC8631		
6	Volute Gasket	1	AC8641		x
23	Shaft Sleeve Gasket	1	AC8644		x
7	Impeller Washer	1	AC8642		
7A	Seal Washer	1	AC2507		
8	Impeller Lockwasher	1	J23875		
9	Impeller Capscrew	1	AC8629		
22	Volute Wear Ring	1	AC8640		x
2	Volute (Pump Casing)	1	AC8648		
1	Volute Drain Plug (1/4")	3	CP-711-523-004		
-	Packing Ring Backing	1	AC0592		
12.5	Volute Capscrew Washer	18	CP-651-001-371		
-	Saddle	1	AC8668		
-	Saddle Capscrew	4	J92298		
(H) 1	Volute Drain Plug (1/2")	3	P39050		
(H) 2	Volute (High Pressure)	1	AC8649		

Parts available as part of a kit (DNxxx) can no longer be ordered individually



# AC Fire / Series 1580 Inline Fire Pump Parts Diagrams

## Reference Figures / Images

